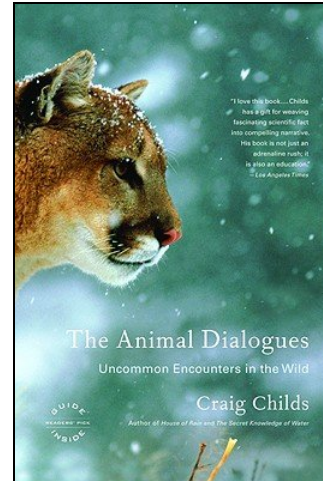
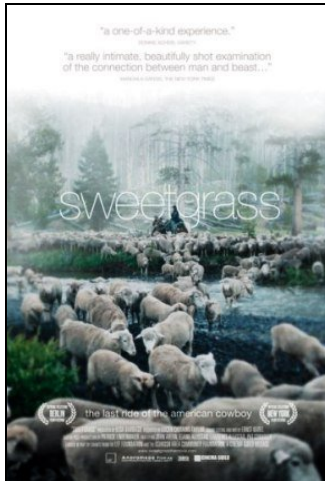


# Sweetgrass Seminar Series

Designed to re-awaken, through the Arts and the Outdoors, your link with the Natural World.



## What does it mean to be wild?

## How has domestication affected animals, humans and the land?

## How does Nature enhance our creativity?

You may sign up for a single seminar, or the entire series of these progressive get-togethers at Mt. Vernon Country Club (20 minutes from Denver, Colorado). Here are a few of the things we'll do:

- **DAY #1** Saturday, March 13, 9:00 – 4:30: write and share spontaneous responses to Craig Child's book *The Animal Dialogues*; talk about the wild roots beneath the surface of our domesticated lives; share our experiences in Nature (Page will talk about her month alone in a remote cabin in the wilds of Wyoming); discuss George Catlin's 1832 vision that humans are a part of and not separate from Nature, enjoy a catered lunch, and more!
- **DAY #2** Saturday, April 17, 9:00 – 4:30: discuss "The Reciprocity of Nature" (Dave Abram, *The Spell of the Sensuous*); discuss Susan Griffin's book *Woman and Nature: The Roaring Inside Her* (for men too!); write and share responses to discussion; attend naturalist presentation at Lookout Mountain Nature Center; enjoy a catered lunch; and more!
- **EVENING #3** Friday, May 14, (time TBA): share a group dinner and attend Denver's only screening of the breathtaking documentary *Sweetgrass* (<http://sweetgrassthemovie.com>) about the last of Montana's Norwegian/American mountain sheepherders
- **DAY #4** Saturday, May 15, 9:00 – 4:00: meet back at Mt. Vernon Country Club and explore what it means to "carry the Dreamtime origins" of the place where we were born; develop a list of the plants and animals who share our landscapes; lunch at Mt. Vernon's private picnic grounds; enjoy a leisurely afternoon hike with time for journaling, sketching, and solitude; create a personal plan for deeper engagement with the natural world.

**A LA CARTE COST:** Day #1 \$125; Day #2 \$125; Evening #3 \$50.00; Day #4 \$125.00 (includes meals)

**ENTIRE SERIES COST:** \$375.00 if registered by March 1; \$400.00 after March 1 (includes meals)

**SPACE IS LIMITED! QUESTIONS or SIGN UP:** email [page@pagelambert.com](mailto:page@pagelambert.com); phone (303) 842-7360

"Look into the eyes of a domestic sheep, and you will see the back of its head. Look into the eyes of a bighorn...and you will see a lost map to place, a depth that we may extinguish before it touches us."  
Ellen Meloy, from "Brides of Place"

Mt. Vernon Country Club: [www.mountvernoncc.com](http://www.mountvernoncc.com) Page Lambert: [www.pagelambert.com](http://www.pagelambert.com)